



## KAILI RESOURCES LIMITED AGM Presentation

**IP Survey at Canegrass**



**RC Drilling at Canegrass Project**



22<sup>nd</sup> December 2022

# Disclaimer



Certain statements contained in this presentation, including information as to the future financial or operating performance of Kaili Resources Limited and its projects, are forward-looking statements. Such forward looking statements:

- Are necessarily based upon a number of assumptions and estimates that, while considered reasonable by Kaili Resources Limited, are inherently subject to significant technical, business, economic, competitive, political and social uncertainties and contingencies;
- Involve known and unknown risks and uncertainties that could cause actual events or results to differ materially from estimated or anticipated events or results reflected in such forward-looking statements; and
- May include, among other things, statements regarding targets, estimates and assumptions in respect of production, prices, operating costs, results, capital expenditures, reserves and resources, and are or may be based on assumptions and estimates related to future technical, economic, market, political, social and other conditions.

Kaili Resources Limited disclaims any intent or obligation to update publicly any forward-looking statements, whether as a result of new information, future events or otherwise.

All forward-looking statements made in this presentation are qualified by the foregoing cautionary statements. Investors are cautioned that forward-looking statements are not guarantees of future performance and accordingly investors are cautioned not to rely on forward-looking statements due to the inherent uncertainty therein.

The information in this presentation relates to exploration results and is based on information compiled by Mr Mark Derriman, Member of the Australasian Institute of Geoscientist. Mr Derriman has sufficient experience that is relevant to the style of mineralisation and type of deposits under consideration and to the activities which he is undertaking to qualify as a Competent Person as defined in the 2012 Edition of the JORC Australasian Code for Reporting of Exploration Results, Mineral Resources and Ore Reserves.

# Corporate Overview



## Corporate Profile

ASX Code	KLR.AX
Shares on Issue	147.4 million
Share Price (last sale)	\$0.013
Market Capitalisation	\$1.92million
Ultimate Parent:	
Inner Mongolia Yitai Investment Co Ltd	51.38%

## Mineral Projects

Gindalbie Gold (100%)	Yilgarn Craton Western Australia
Halls Creek Cobalt Nickel Copper Gold (100%)	Kimberley Region Western Australia
Tennant Creek Gold Copper (100%)	Warramunga Province Northern Territory
Limestone Coast Rare Earth Elements (100%)	Murray Basin South Australia

## Board & Management

Donghai Zhang	Chairman
Chunlin Liu	Director
Jing Li	Director
Jianzhong Yang	Director
Long Zhao	Executive Director and Company Secretary
Mark Derriman	Consultant Geologist

# Business Objectives

- ❖ **MINERAL EXPLORATION TO PROVE RESOURCES FOR EVENTUAL MINING IN AUSTRALIA**
- ❖ **ACQUIRE MINING DEVELOPMENT IN AUSTRALIA FOR EARLY GROWTH**

Current projects in Australia are:

- Yilgarn Craton: Gindalbie- Gold
- Kimberley Region: Halls Creek - Cobalt/Copper/Nickel/Gold
- Warramunga Province: Tennant Creek – Gold Copper
- Murray Basin: Limestone Coast – Rare Earth Elements

# KAILI RESOURCES PROJECT LOCATIONS

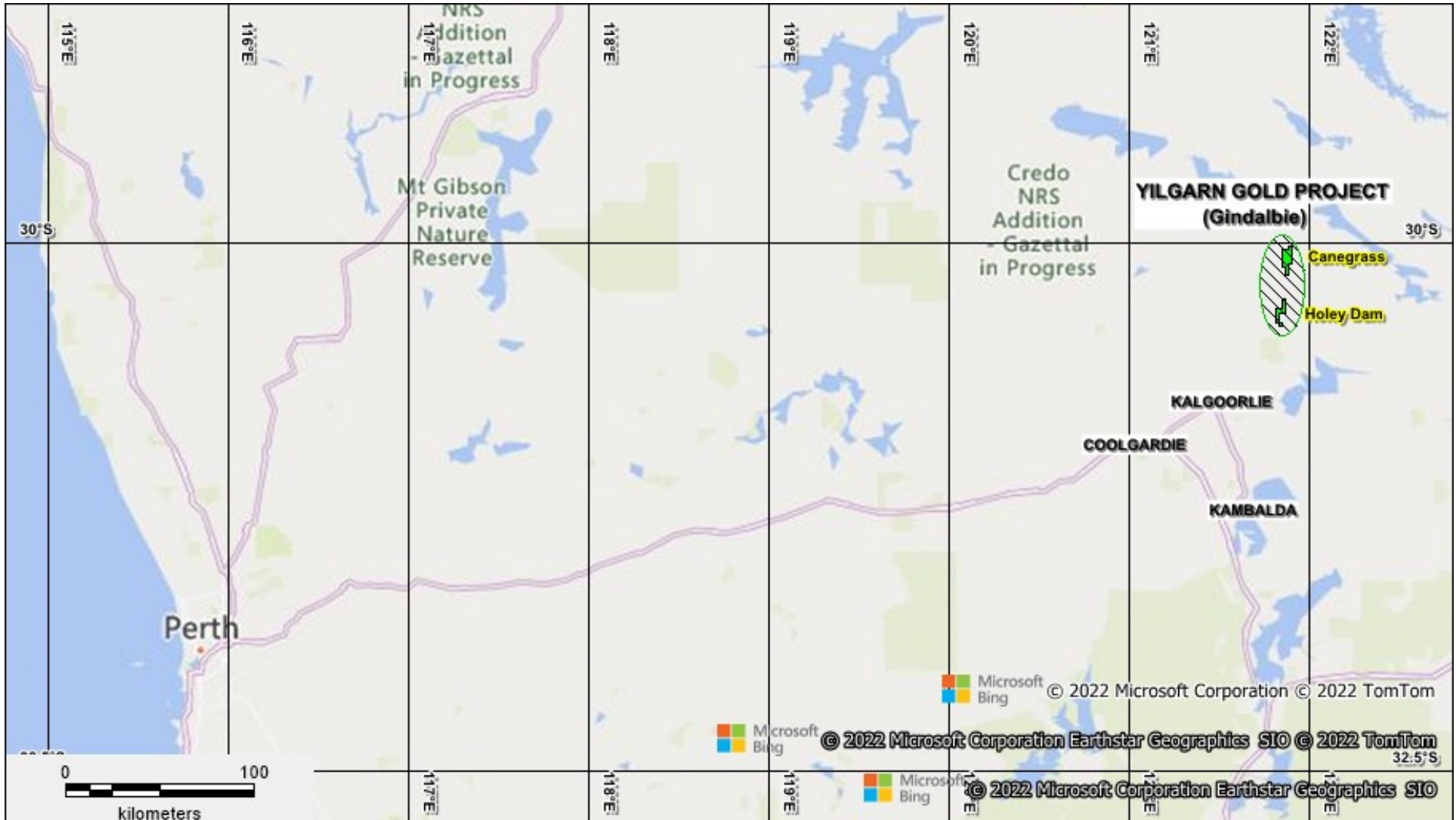


# KAILI RESOURCES TENEMENT REGISTER



Granted	Tenement	Name	Commodity	Region	Registered Holder	Beneficial Interest	Area Blocks	Expiry	Comments
30/05/2016	E31/1113	Canegrass	Gold	WA - Yilgarn Craton	Kaili Gold Pty Ltd	100%	17	29/05/2026	5 Years Renewal Granted
1/07/2016	E27/550	Holey Dam	Gold	WA - Yilgarn Craton	Kaili Gold Pty Ltd	100%	10	30/06/2026	5 Years Renewal Granted
31/08/2018	E80/5112	Black and Glidden	Cobalt/Gold/ Copper/Nickel	WA - Lamboo Province	Kaili Iron Pty Ltd	100%	32	31/08/2023	
31/08/2018	E80/5113	Carrington	Cobalt/Gold/ Copper/Nickel	WA - Lamboo Province	Kaili Iron Pty Ltd	100%	16	31/08/2023	
31/08/2018	E80/5114	Sandy Creek	Cobalt/Gold/ Copper/Nickel	WA - Lamboo Province	Kaili Iron Pty Ltd	100%	20	31/08/2023	
31/08/2018	E80/5115	Wild Dog	Cobalt/Gold/ Copper/Nickel	WA - Lamboo Province	Kaili Iron Pty Ltd	100%	22	31/08/2023	
Application	ELA 32666	Kovacs	Gold/Base Metals	NT - Warramunga Province	Kaili Gold Pty Ltd	100%	92		Application 23/02/2021
14/09/2021	EL 32665	Gidyea	Gold/Base Metals	NT - Warramunga Province	Kaili Gold Pty Ltd	100%	65	14/09/2027	6 Years Granted
18/10/2022	EL 6856	Lameroo	Rare Earths	Limestone Coast, Murray Basin	Kaili Gold Pty Ltd	100%	310	18/10/2028	6 Years Granted
						Total	584		

# WA - GINDALBIE PROJECT LOCATION



Canegrass E31/1113 and Holey Dam E27/550

# WA - Gindalbie Gold Project



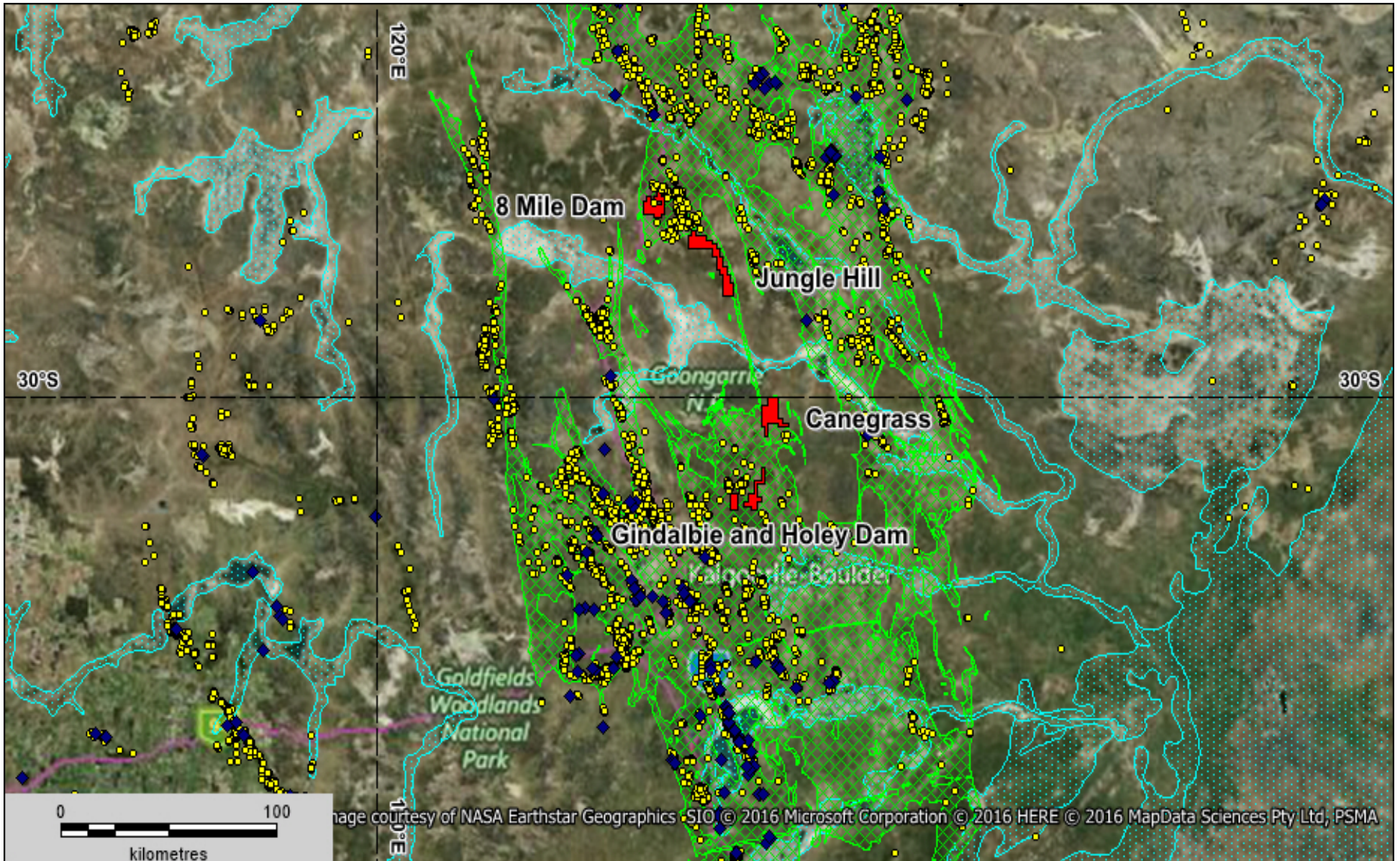
## KEY ELEMENTS

- The Yilgarn Craton of Western Australia contains several gold and nickel producing mines
- 65 km north of Kalgoorlie, famous gold production region with current multimillion ounce productions from several mining operations
- Gold processing facility within 70 km is available as a toll treating option
- Landowners supportive and Native Title agreements in place.
- Phase 1 Aircore Drilling completed in 2020 – Best Gold results of 1 m @ 3.96 ppm, 1 m @ 1.08 ppm and 1 m @ 0.88 ppm (*ASX announcement: Drilling Results at Gindalbie Gold Project Yilgarn Craton WA - 3<sup>rd</sup> December 2020*)
- Phase 2 Reverse Circulation drilling at Canegrass completed in 2022 - Elevated RC gold intersections >0.25 g/t Au were obtained in most drill holes with the southern-most line having 1 m @ 1.4 g/t Au (*ASX announcement: RC Drilling Results at Canegrass, Gindalbie Project - 4<sup>th</sup> April 2022*)
- IP survey completed at Canegrass Prospect F in December 2022 – Significant chargeable anomaly - Further RC drill testing warranted in 2023 (*ASX announcement: IP Survey Completed at Canegrass - 9<sup>th</sup> December 2022*)

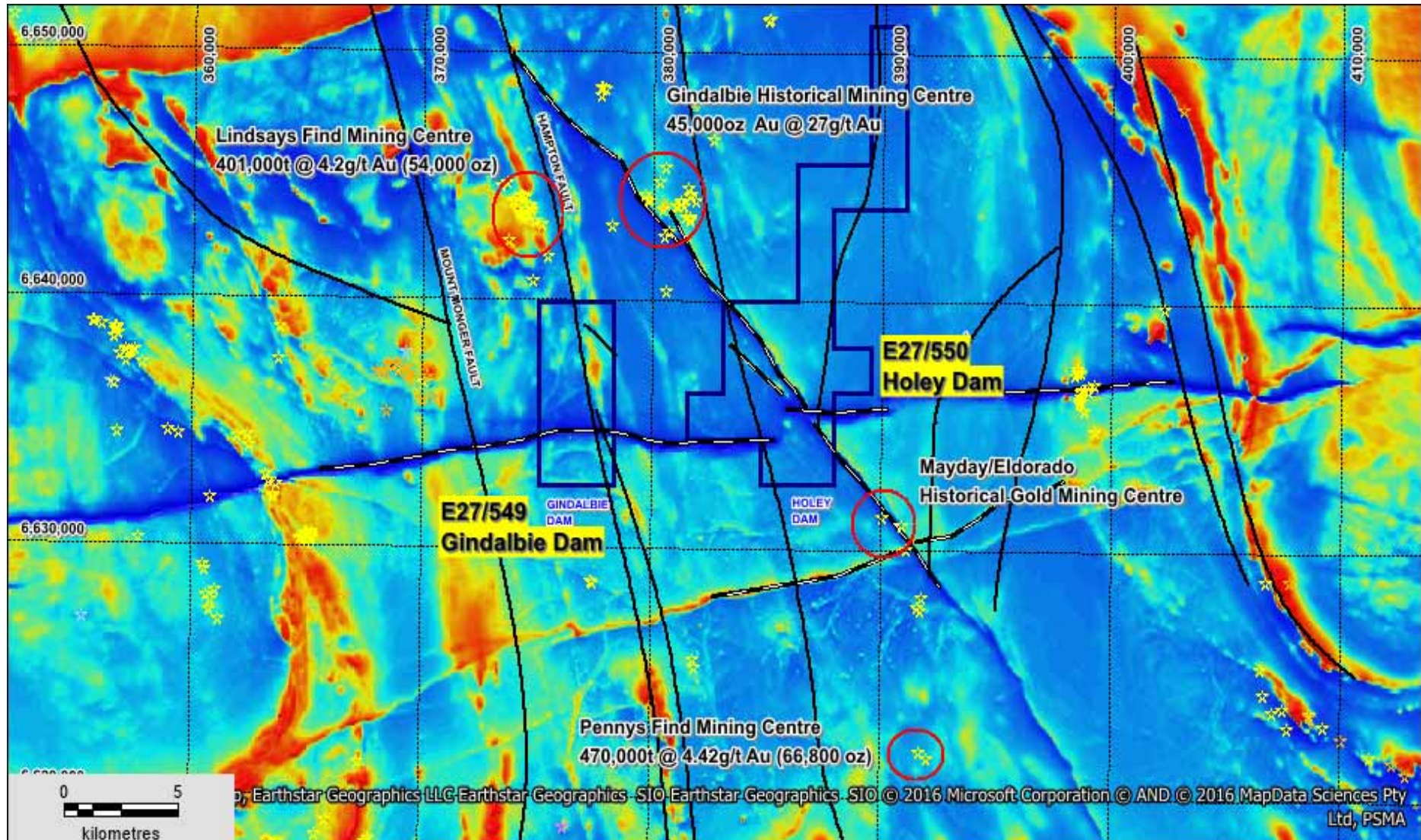


# WA - GINDALBIE/KOOKYNIIE PROJECTS

## GOLD OCCURRENCES IN YELLOW

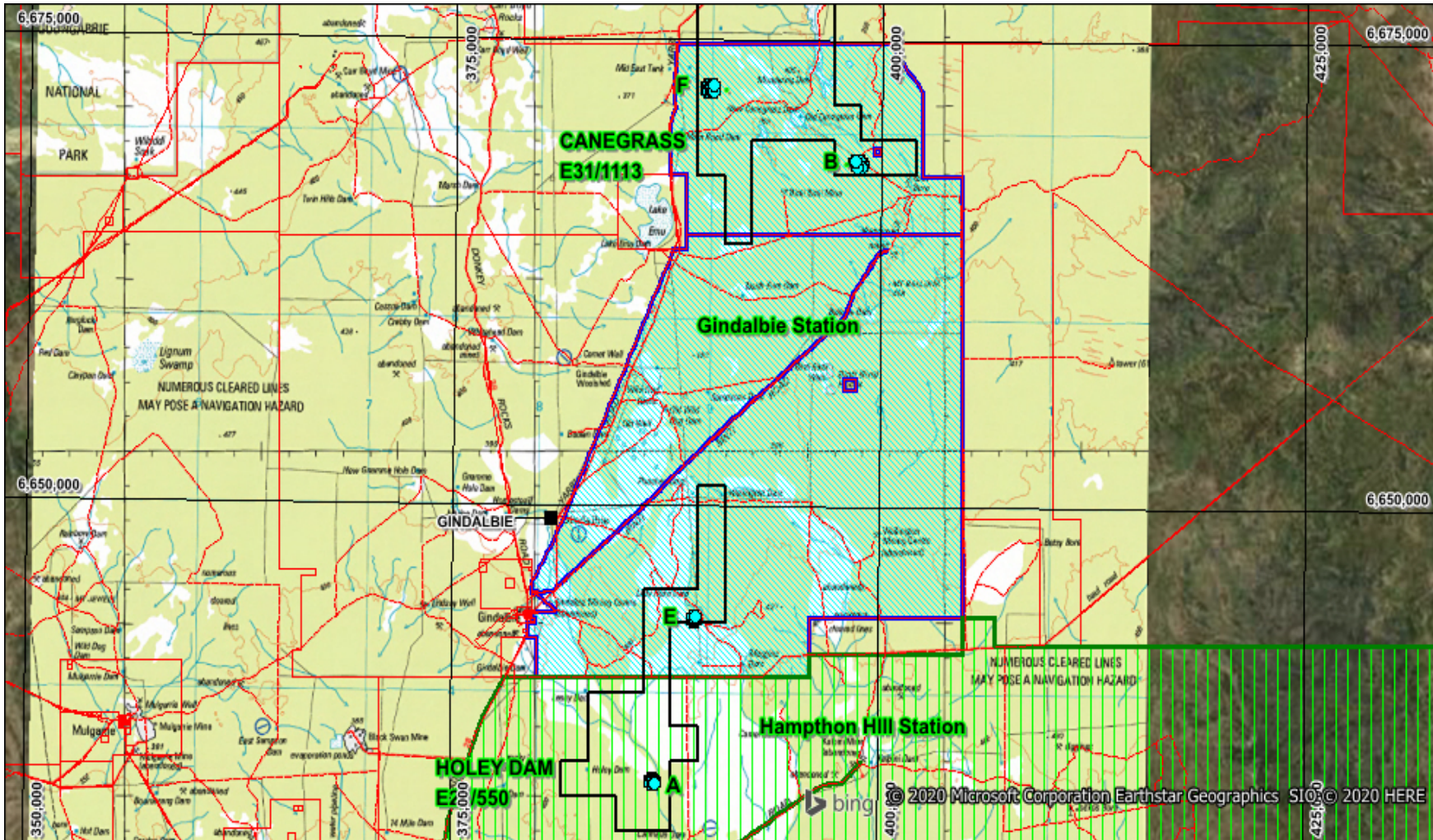


# WA - GINDALBIE PROJECT- HOLEY/GINDALBIE DAMS



Note that E27/549 was relinquished in 2021

# WA - CANEGRASS PASTORAL STATIONS

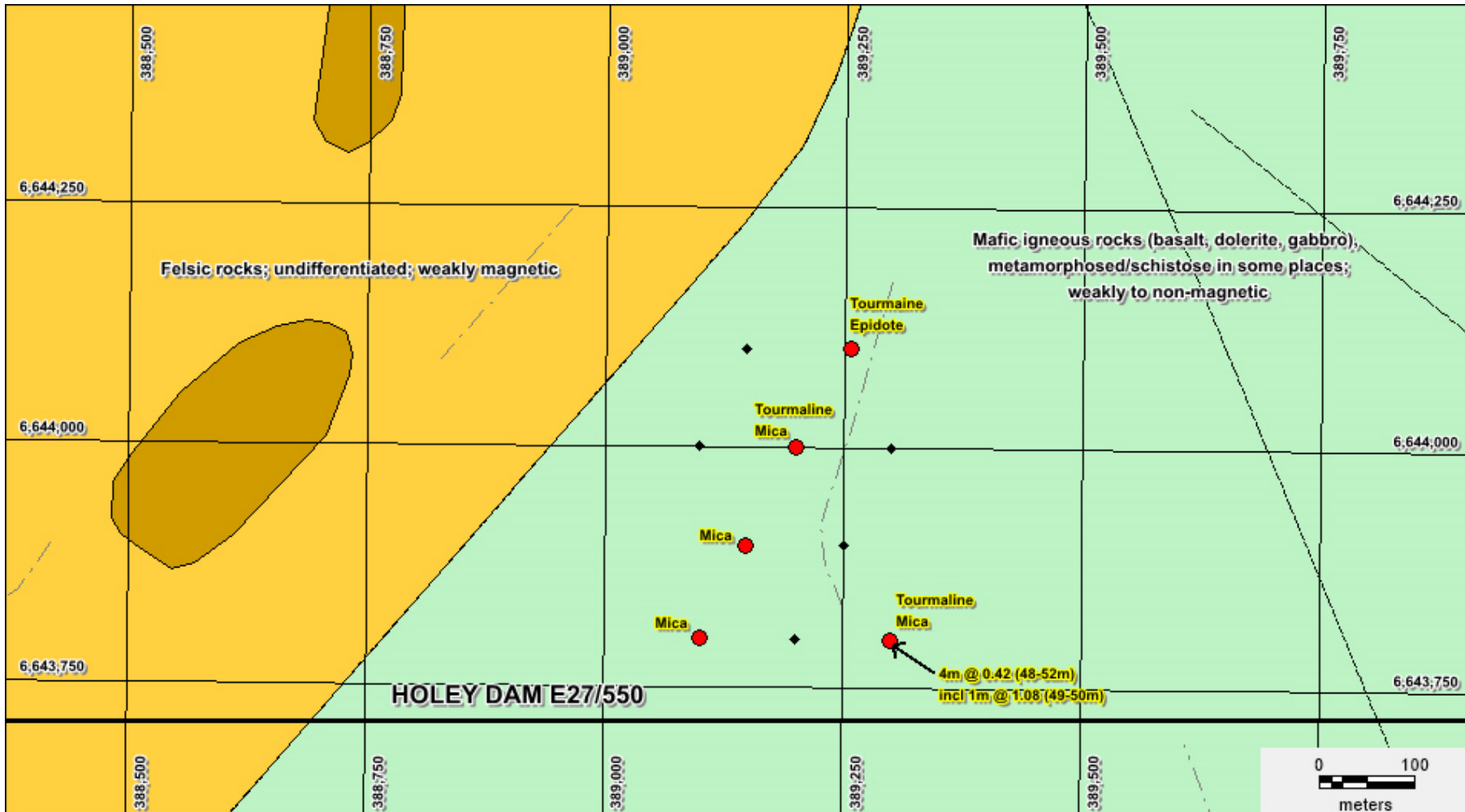


- The drilling was within the Holey Dam and Canegrass Tenements
- Aircore drilling in September 2020 with 50 holes completed for an average depth of 37 m (*ASX announcement: Drilling Results Gindalbie Gold Project Yilgarn Craton - 3<sup>rd</sup> December 2020*)
- A total of 1,866 m was drilled to sample fresh bedrock beneath transported overburden and saprolite clays
- The drilling targeted major structures and structural intersections
- Gold: seven samples > 0.1ppm to a maximum of 3.96 ppm
- Copper: five samples > 200ppm to a maximum of 620 ppm
- Sulphur: six samples > 2% to a maximum of 4.1%
- The highest gold was associated with 5,400 ppm Cr and 700 ppm Ni

## Holey Dam Area E

- The drilling intersected dolerite and ultramafic rocks
- Quartz veining in some holes
- The best intersections were 4 m @ 0.29 ppm Au from 25 m to 29 m and 4 m @ 0.42 ppm Au including 1 m @ 1.08 ppm Au
- The spectral mineralogical study highlighted white mica and tourmaline in several samples. These minerals are likely alteration products especially tourmaline that occurs as an alteration mineral adjacent to some orogenic gold deposits
- The mica/tourmaline trend is planned to be tested in 2023

# WA - HOLEY DAM AIRCORE DRILLING



Aircore drilling with anomalous gold and mica/tourmaline  
from spectral mineralogical analyses

## Canegrass Area F

- The drilling intersected altered and mineralised gabbro in addition to basalt and ultramafic rocks adjacent to the Emu Fault (*ASX announcement: RC Drilling Results at Canegrass, Gindalbie Project - 4<sup>th</sup> April 2022*)
- White mica, carbonate and chlorite minerals were noted in the spectral mineralogical study and these are possible alteration products associated with Emu Fault
- Significant gold intersection included 1 m @ 3.96 ppm, 1 m @ 0.48 ppm and 1 m @ 0.88 ppm
- Elevated RC gold intersections >0.25 g/t Au were obtained in most drill holes with the southern-most line having 4 m composite intersections of 0.6 g/t Au and 0.5 g/t Au in addition to other intersection to 1 m @ 1.4 g/t Au
- IP survey completed in December 2022 – Significant chargeable anomaly - Further RC drill testing warranted in 2023

# CANEGRASS REVERSE CIRCULATION DRILLING KAILI



Reverse Circulation Drill Rig in Operation – Canegrass Project



Significant gold intervals are shown below:

## **CGRC001**

3m@ 0.6 g/t 51-53 m including 1 m @ 1.0 g/t 51-52 m

## **CGRC003**

3m@ 0.38 g/t 69-71 m

## **CGRC004**

1m@ 0.32 g/t 62-63 m

## **CGRC006**

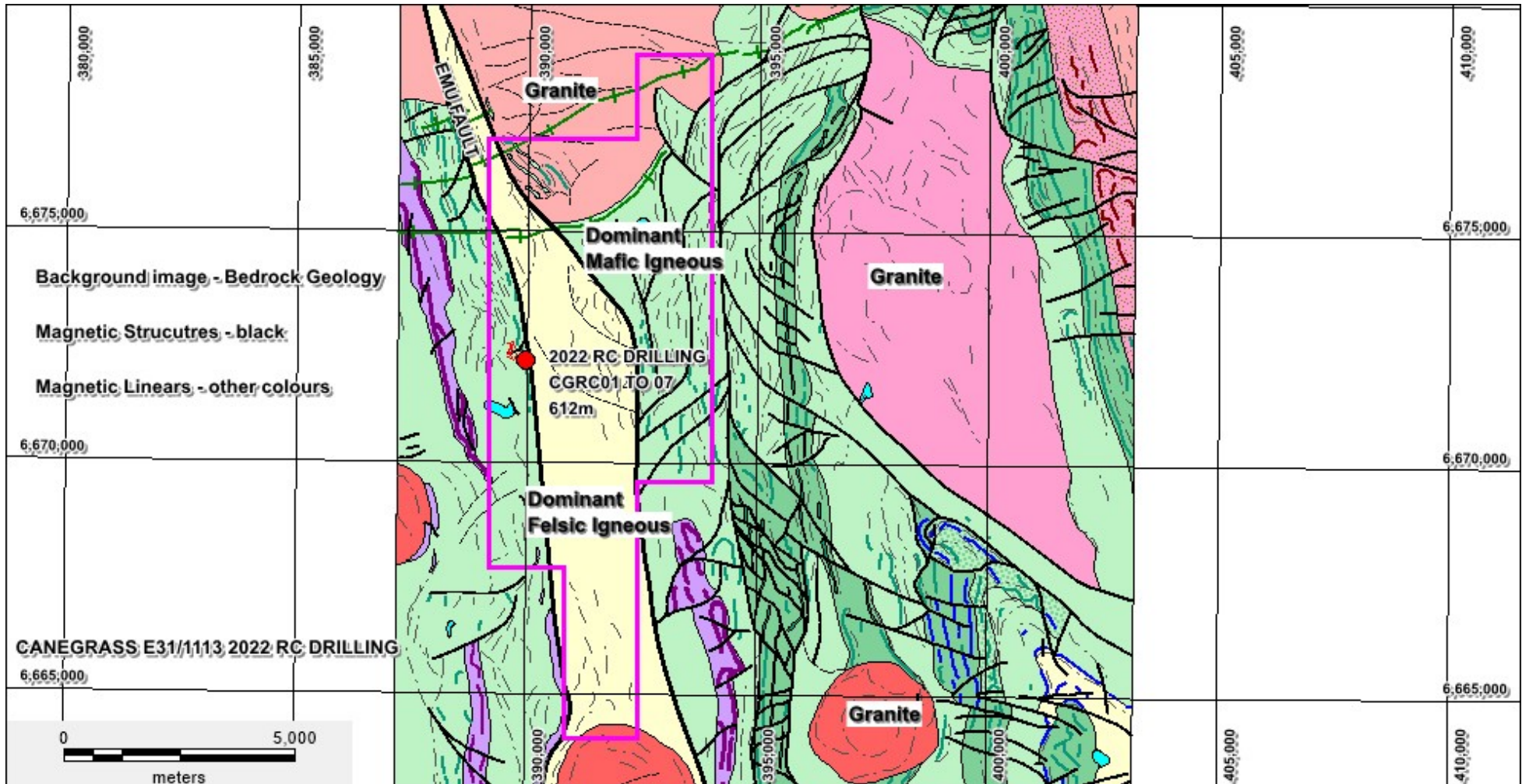
4 m @ 0.52 g/t (4 m composite to be split into 1 m samples)

## **CGRC007**

4 m @ 0.6 g/t (4 m composite to be split into 1m samples) 1m@ 0.54 g/t 73-74 m  
1m@ 1.4 g/t 77-78 m

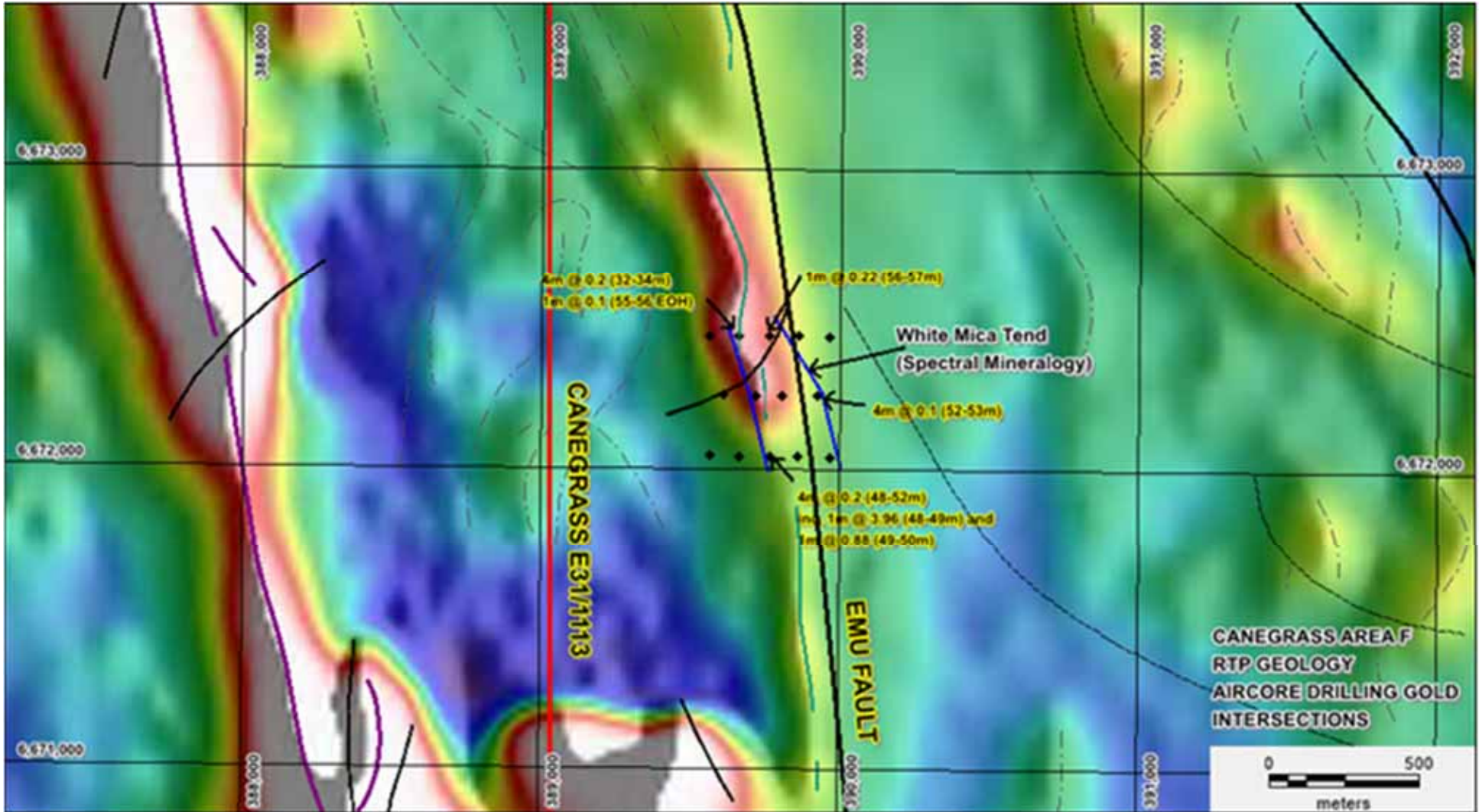
*(ASX announcement: RC Drilling Results at Canegrass, Gindalbie Project - 4th April 2022)*

# WA - CANEGRASS RC DRILLING



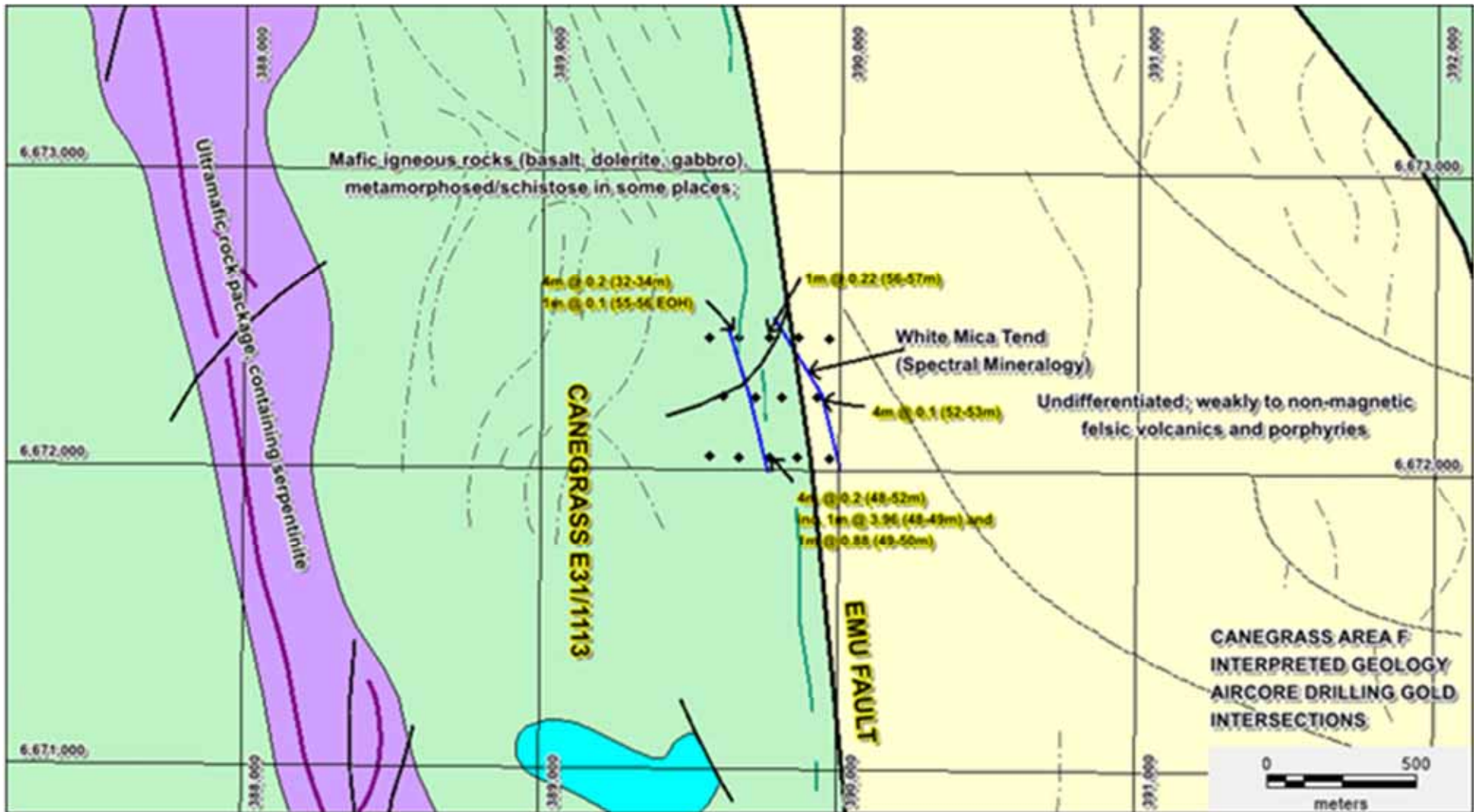
Interpreted geology showing the location of the 2022 RC Drilling

# WA - CANEGRASS AIRCORE/RC DRILLING



Magnetic image showing drilling grid, Mica alteration? trend and anomalous gold intersections

# WA - CANEGRASS AIRCORE/RC DRILLING



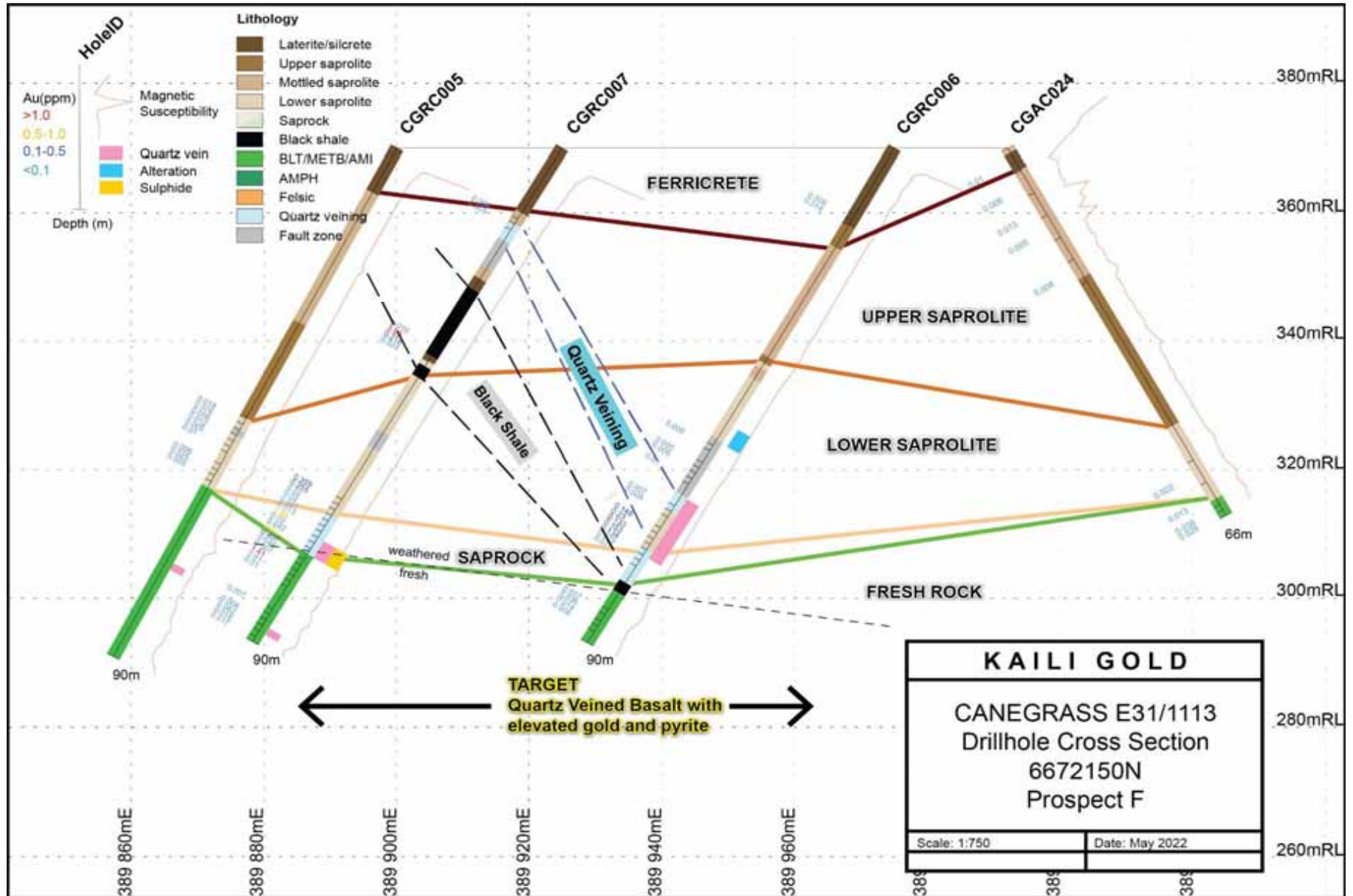
Interpreted geology showing drilling grid, Mica alteration? trend and anomalous gold intersections

# WA - CANEGRASS RC DRILLING Au INTERSECTIONS

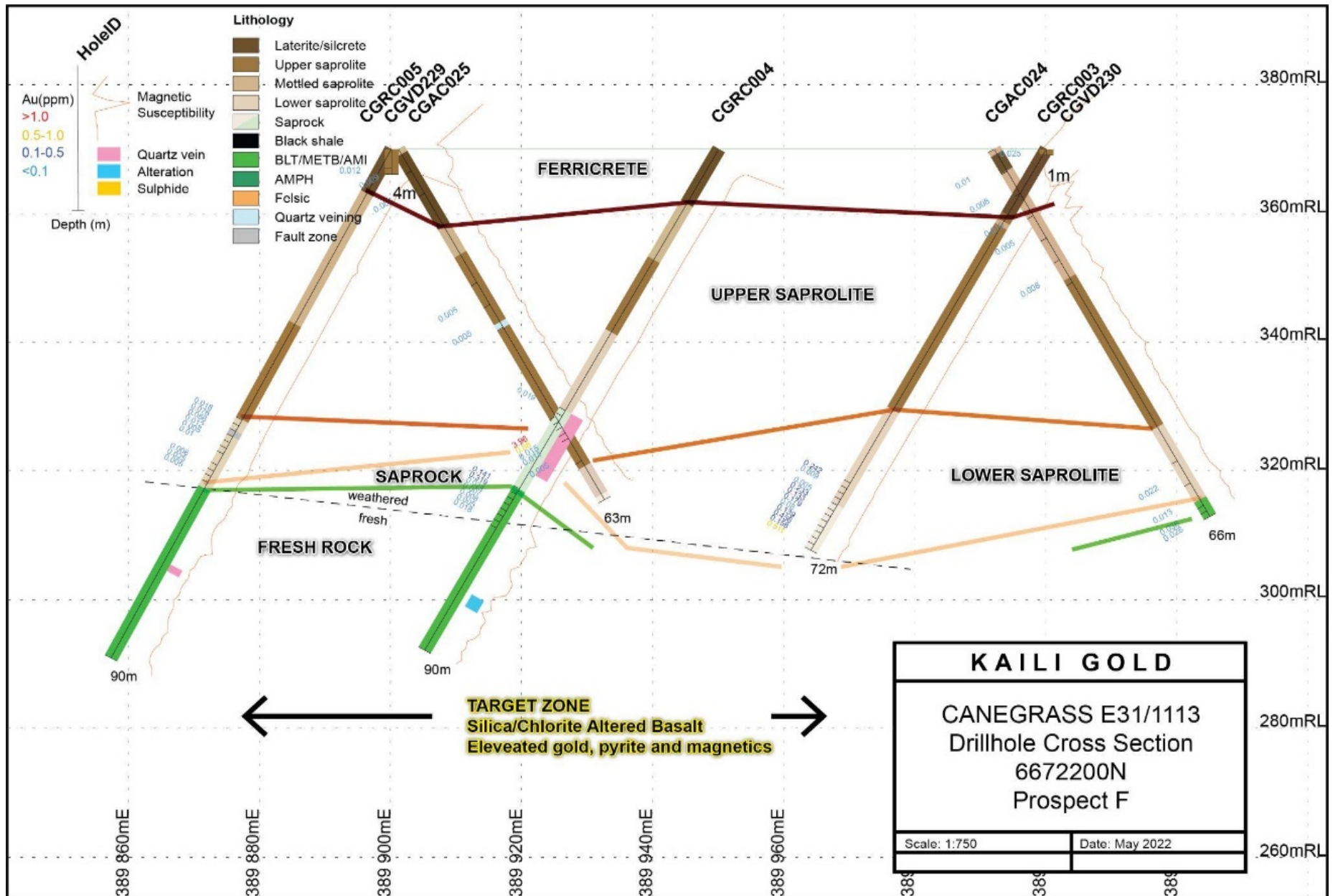


RC drilling gold intersections  
 ASX announcement: 4<sup>th</sup> April 2022

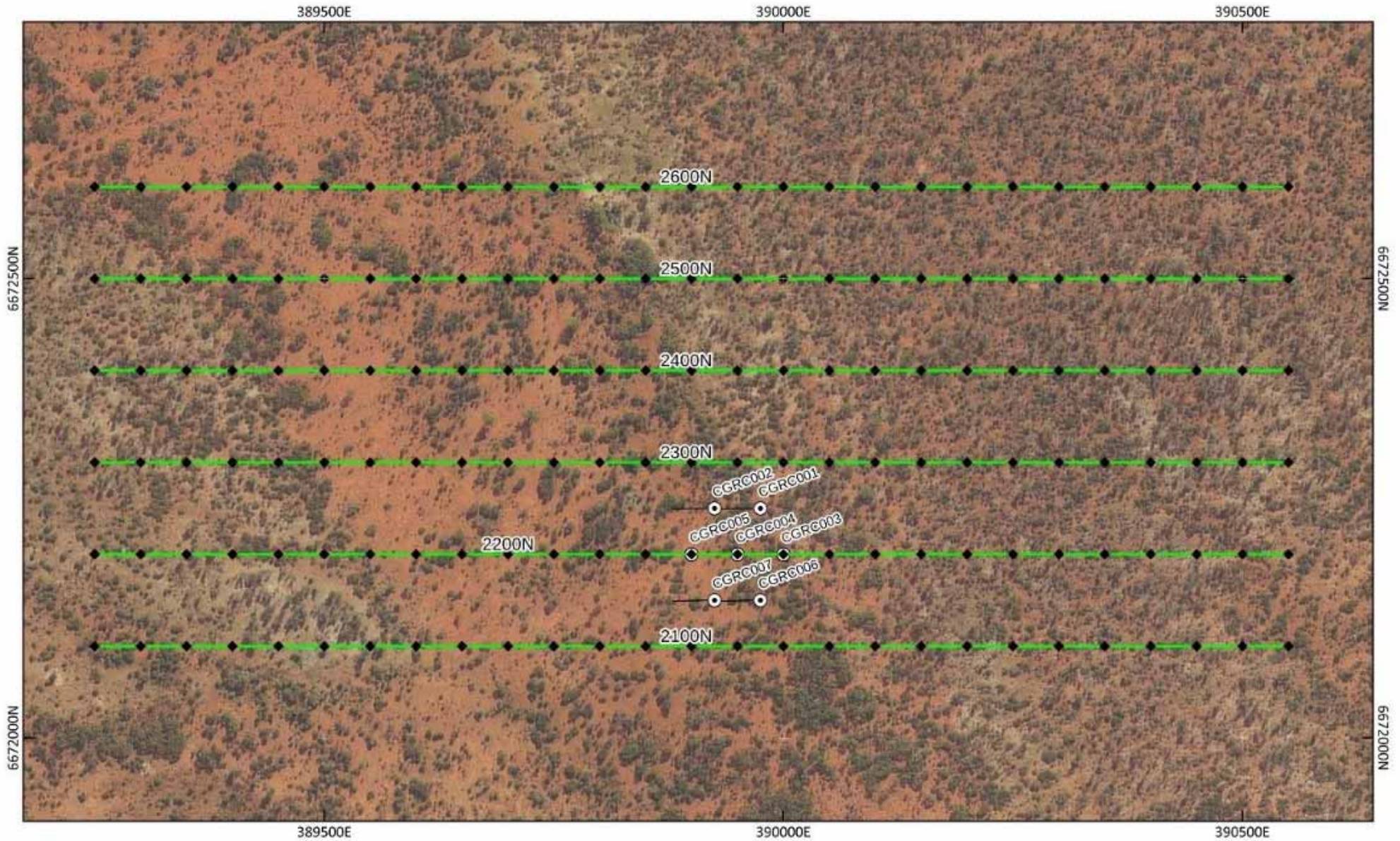
# WA - CANEGRASS RC DRILLING 6672150N



# WA - CANEGRASS RCDRILLING 6672200N



# WA - CANEGRASS IP GRID AND 2022 RC DRILLING



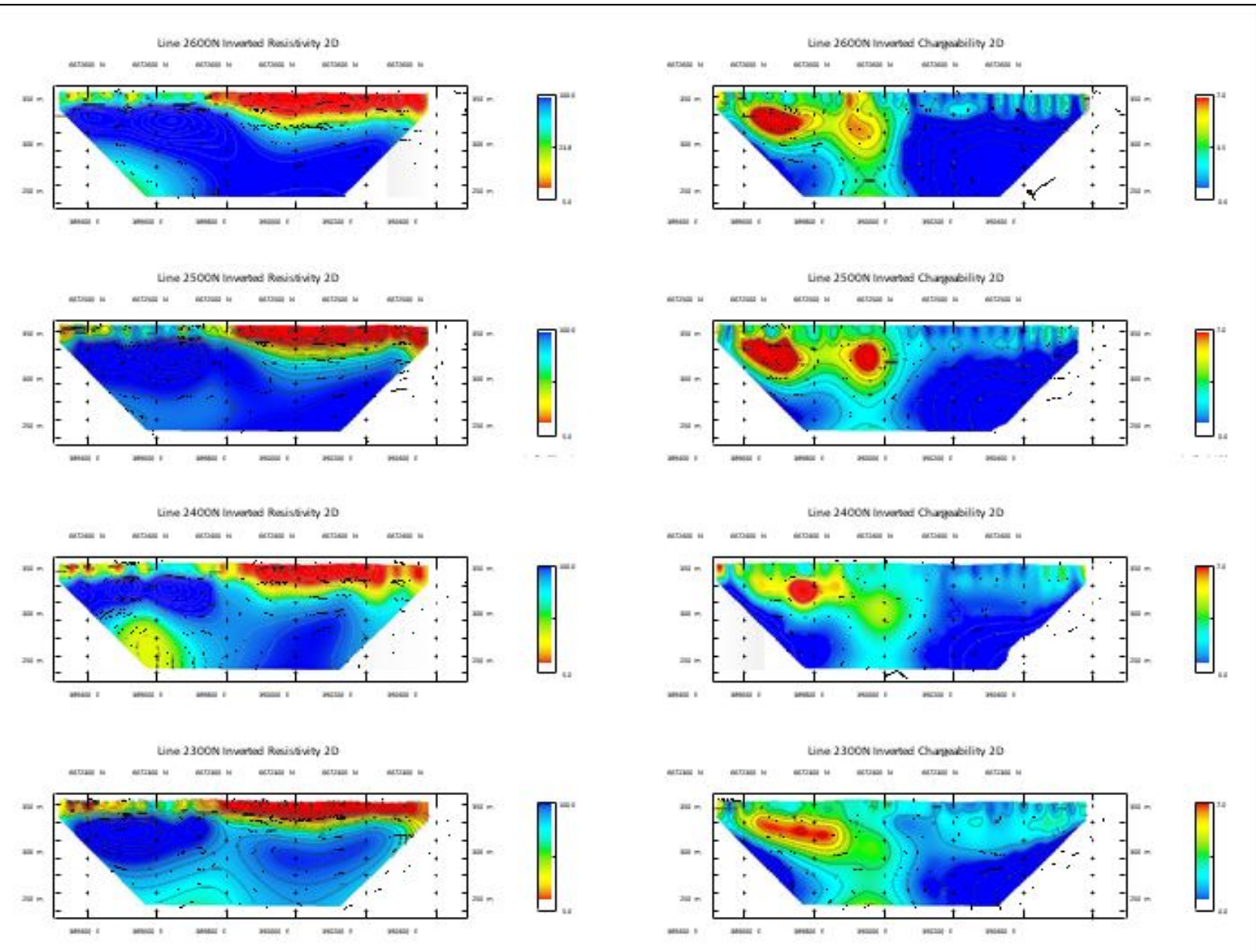


# WA - CANEGRASS RESISTIVITY AND CONDUCTIVITY SECTIONS



## Resistivity

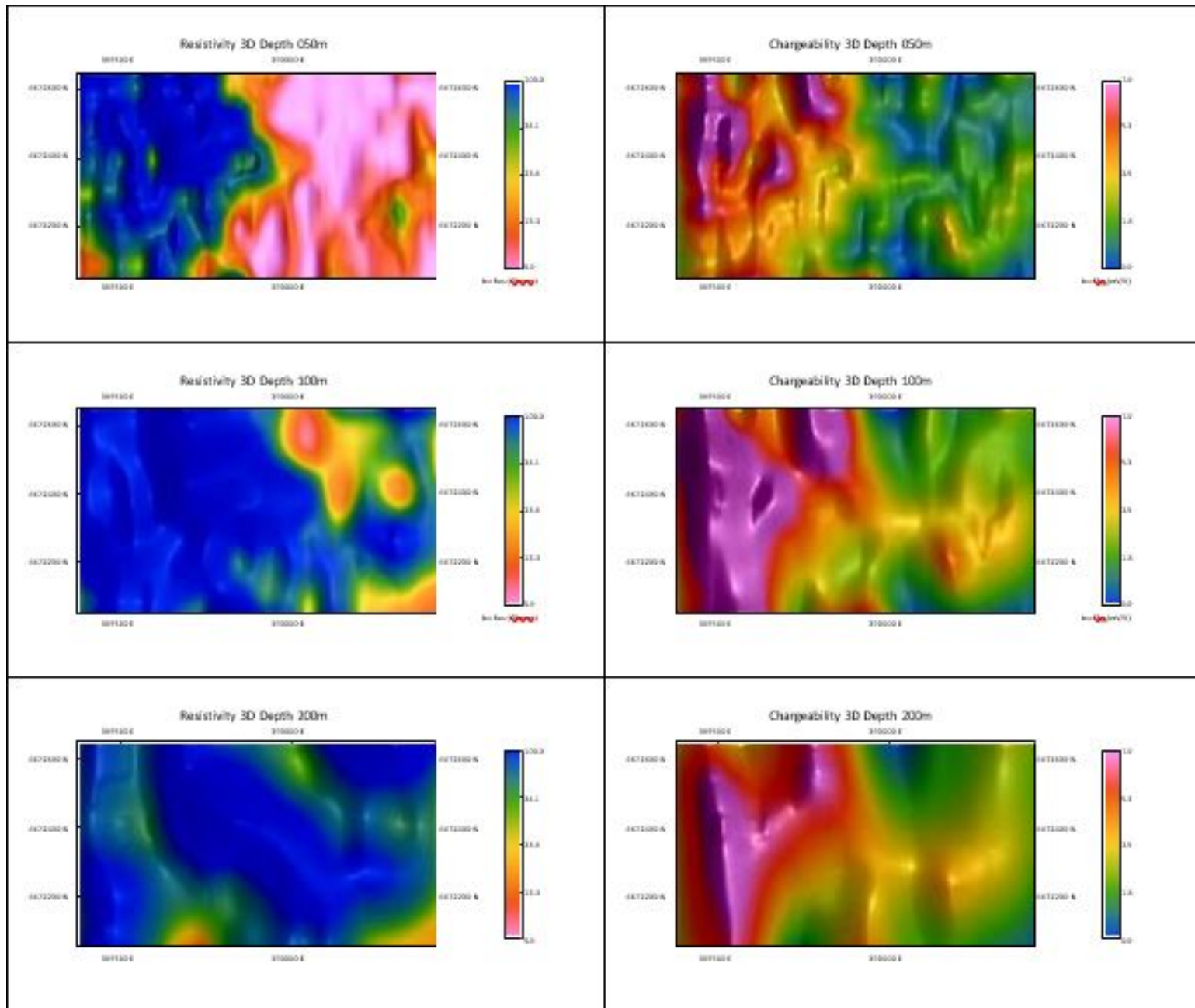
## Conductivity



# WA - CANEGRASS IP DEPTH MODEL SLICES

Resistivity

Conductivity



50 m

100m

200m

# WA - CANEGRASS IP TARGETS

- ❖ Significant chargeable anomaly spatially associated with a N-S linear magnetic high along strike from the RC drilling (*ASX announcement: IP Survey Completed at Canegrass WA - 9<sup>th</sup> December 2022*)
- ❖ Weak chargeable anomaly 100m south of the RC drilling
- ❖ Broad strong near surface chargeable zone west of the drilling, may be lithology
- ❖ Based on the results of the IP survey further RC drill testing is warranted likely in Q2 2023 following board approval

- Surface geological and regolith mapping across the area of then IP anomaly – Q1 2023
- RC drill testing of the significant chargeability anomalies associated with the Canegrass IP survey – Q2 2023
- RC drill testing of the Holey Dam tenement – Q2 2023

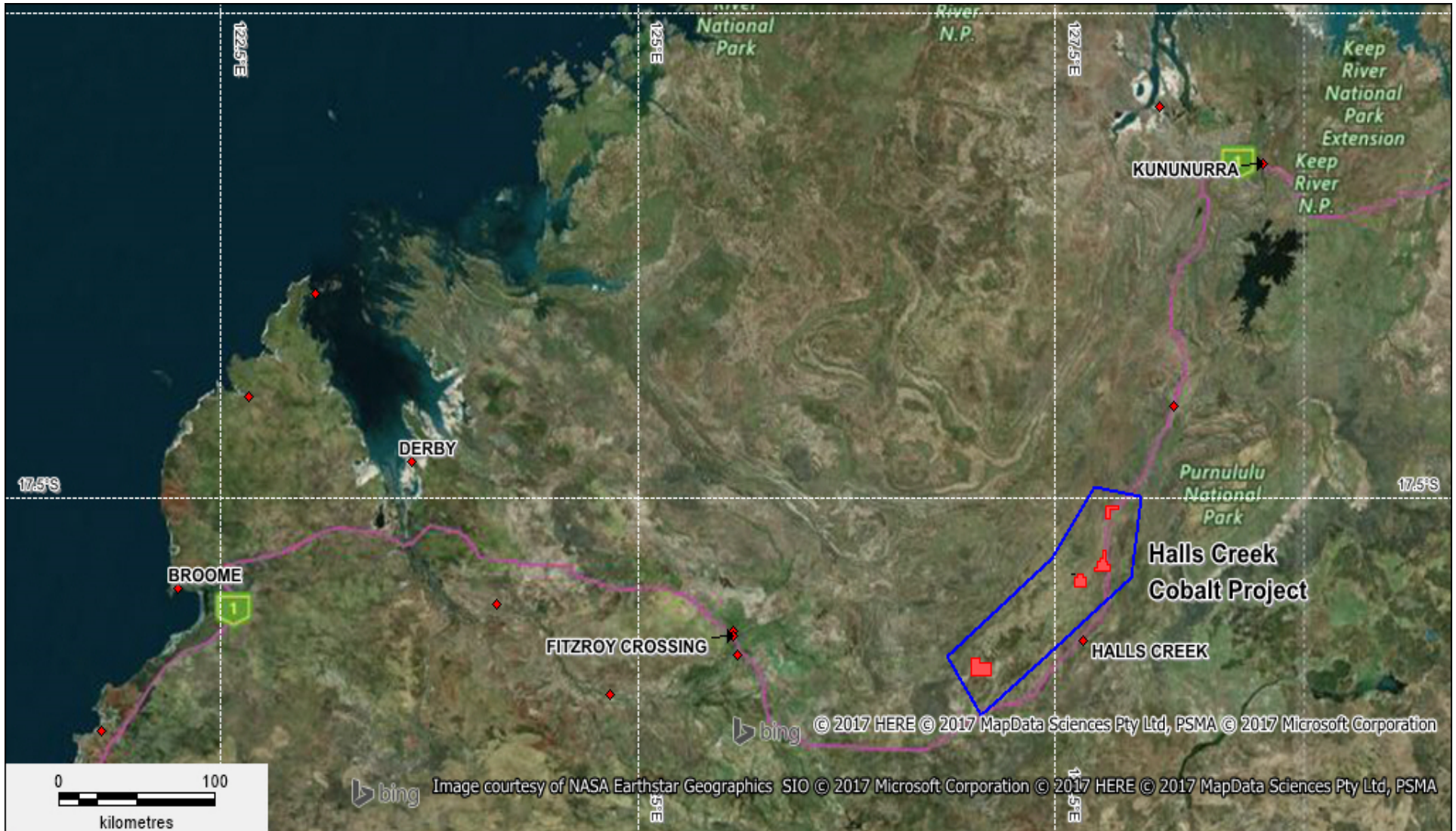
# WA - HALLS CREEK COBALT, COPPER, NICKEL AND GOLD PROJECT

---

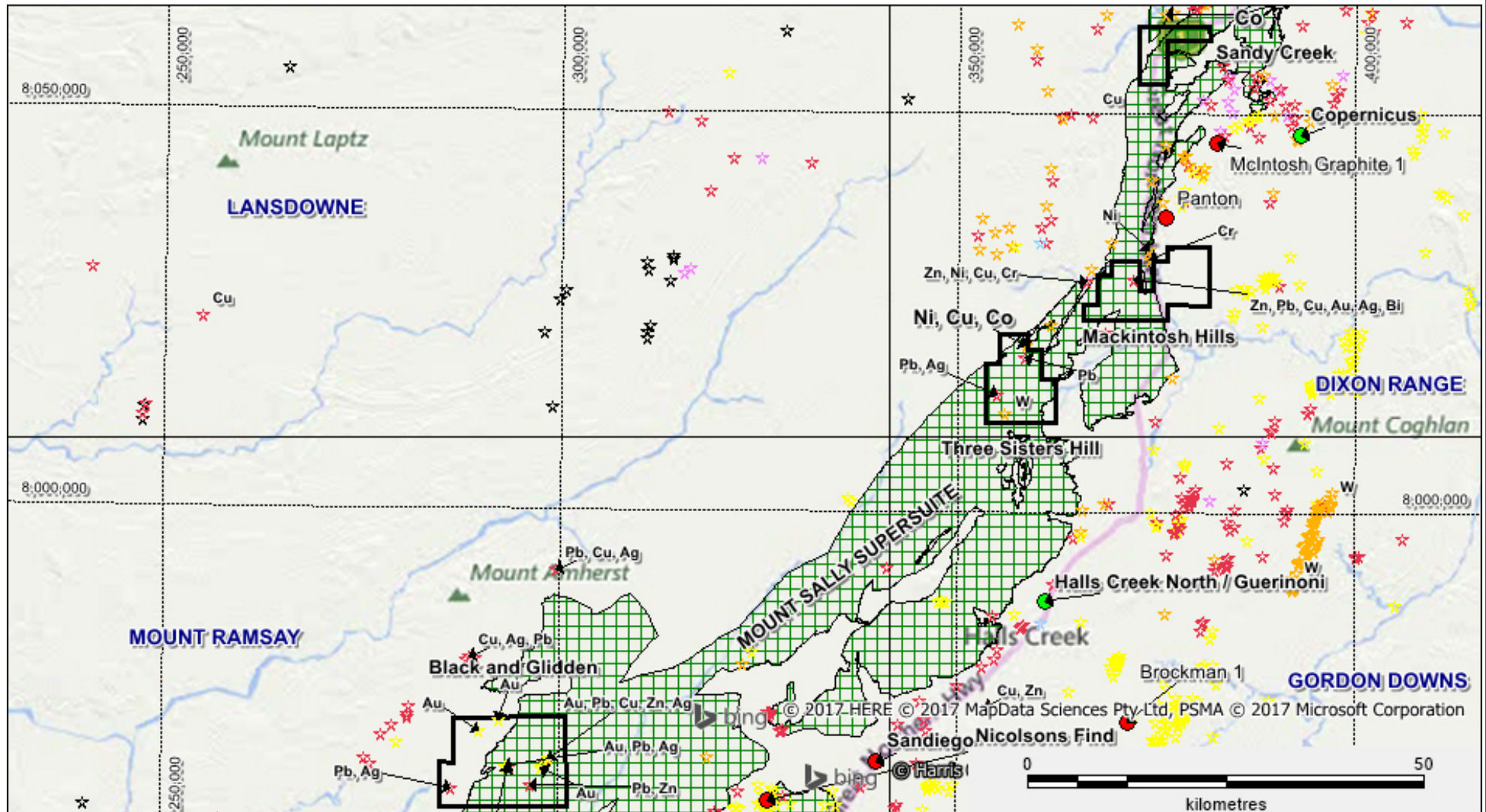


- Located in Kimberly Region of WA
- 80 km from the town of Halls Creek
- The target commodities are Co Au, Cu, Pb, Zn, Ni
- The cobalt occurs in ultramafic intrusive rocks such as norite, gabbro and gabbro-norite
- These rocks are within a broader unit – Sally Downs Supersuite
- There is a cobalt occurrence in one of the four tenements

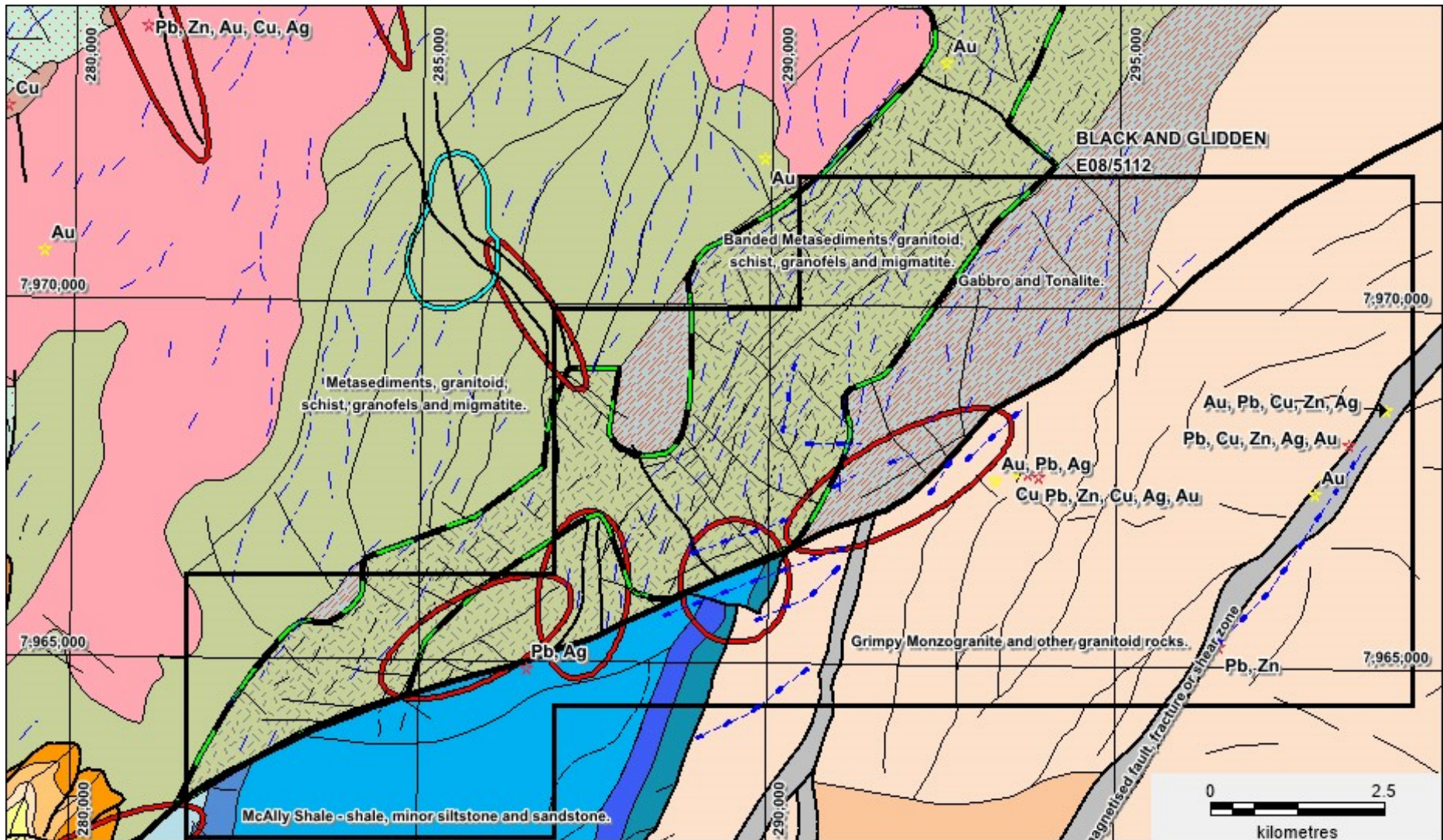
# WA - HALLS CREEK PROJECT LOCATION



# WA - HALLS CREEK PROJECT TENEMENTS AND MINERAL OCCURRENCES



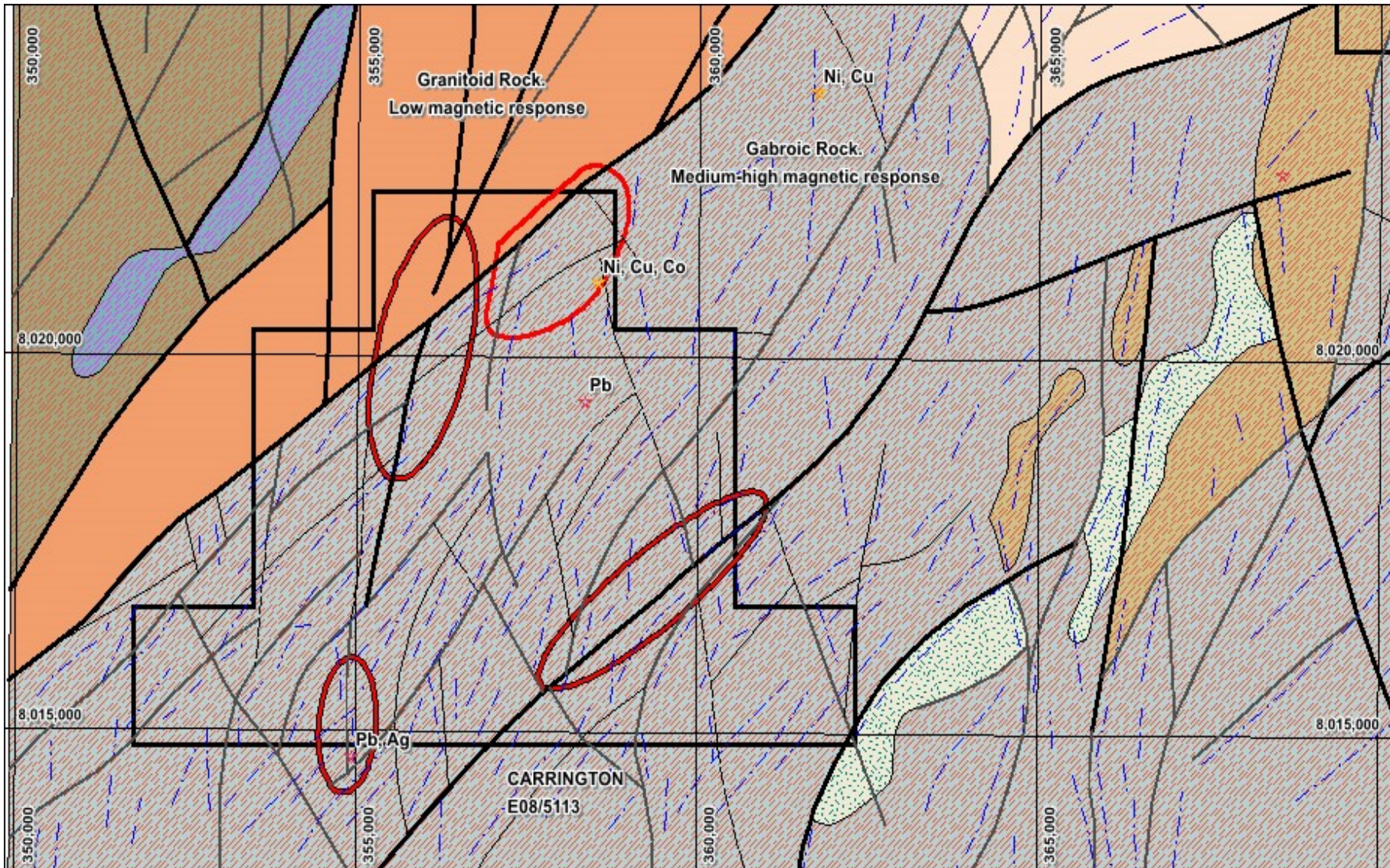
# WA - BLACK AND GLIDDEN TARGETS



Black and Glidden Interpreted Geology Structure Mineral Occurrences and Targets

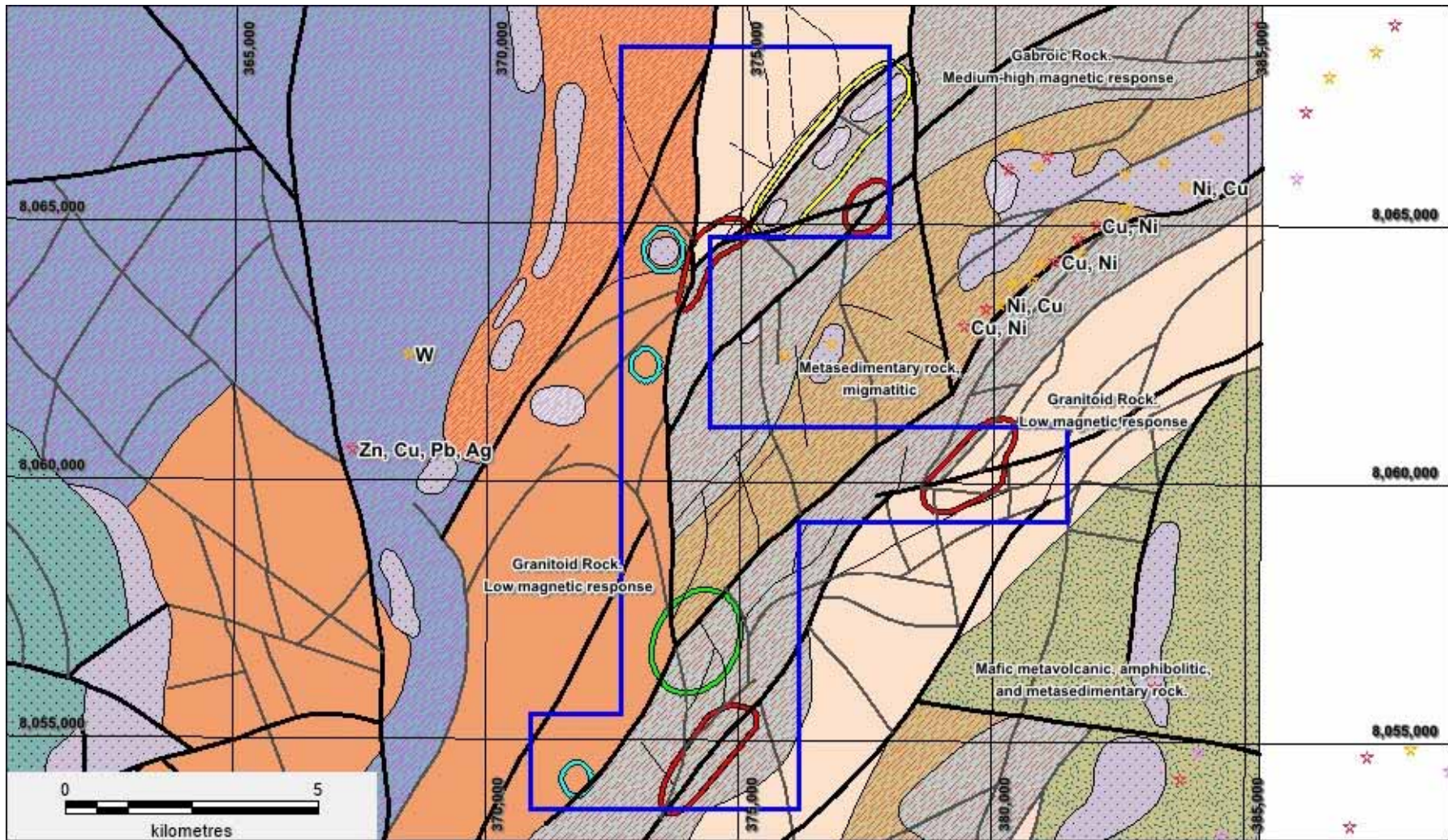


# WA - CARRINGTON TARGETS



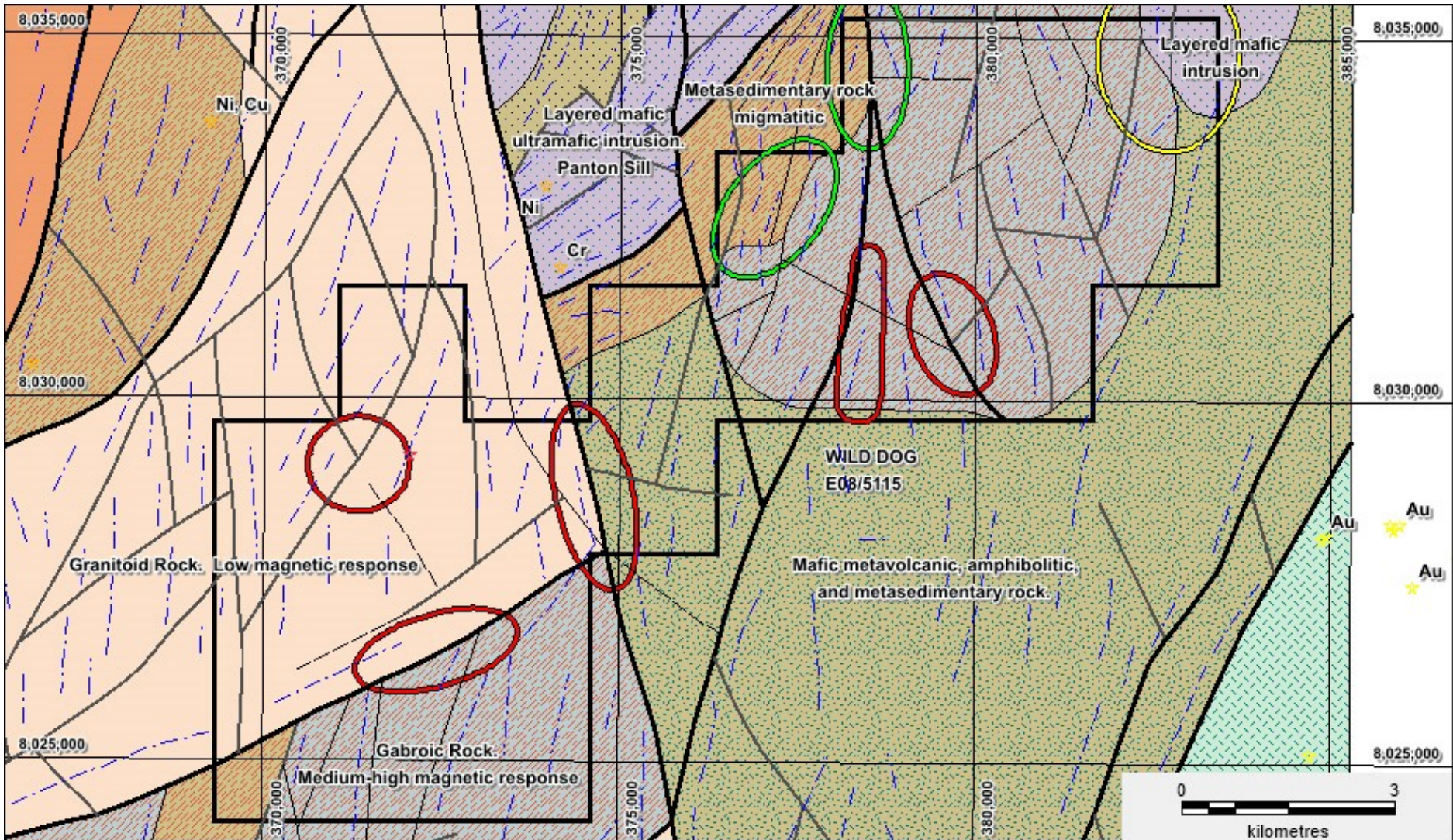
Carrington Interpreted Geology Structure Mineral Occurrences and Targets

# WA - SANDY CREEK TARGETS



Sandy Creek Interpreted Geology Structure Mineral Occurrences and Targets

# WA - WILD DOG TARGETS



Wild Dog Interpreted Geology Structure Mineral Occurrences and Targets

## Halls Creek Planned Exploration

- Work Programs for all 4 tenements have been submitted to the KLC for review
- Apart from the Black and Glidden tenement the other 3 tenements will be helicopter supported.
- The Traditional Owners(TO) have proposed for heritage teams to participate in inspections of the Company's target areas.
- Helicopter supported surface geochemical sampling of the high priority targets
- Site work proposed for the dry season in 2023

# NT - TENNANT CREEK

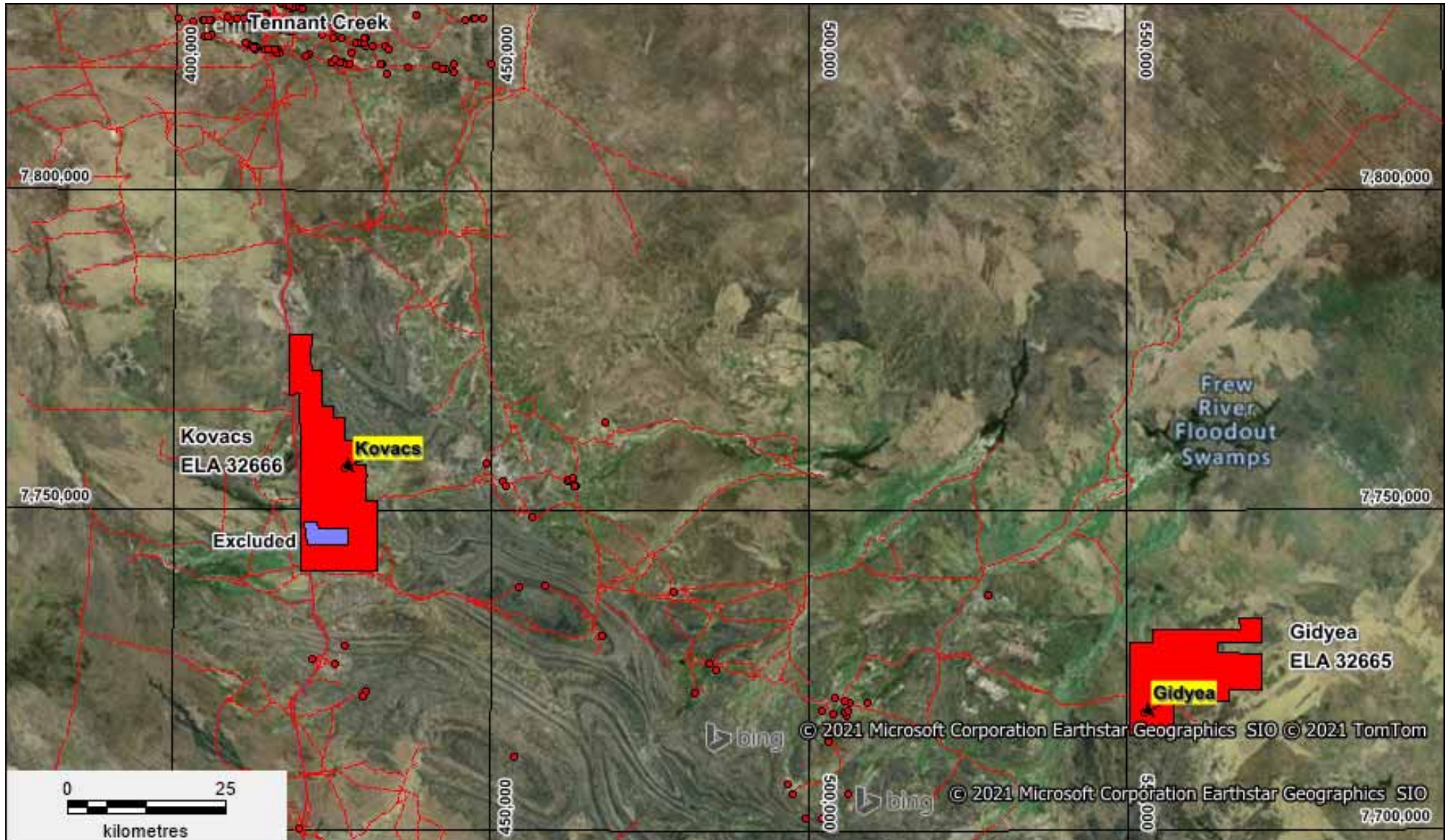
## COPPER, GOLD and COBALT PROJECT

---



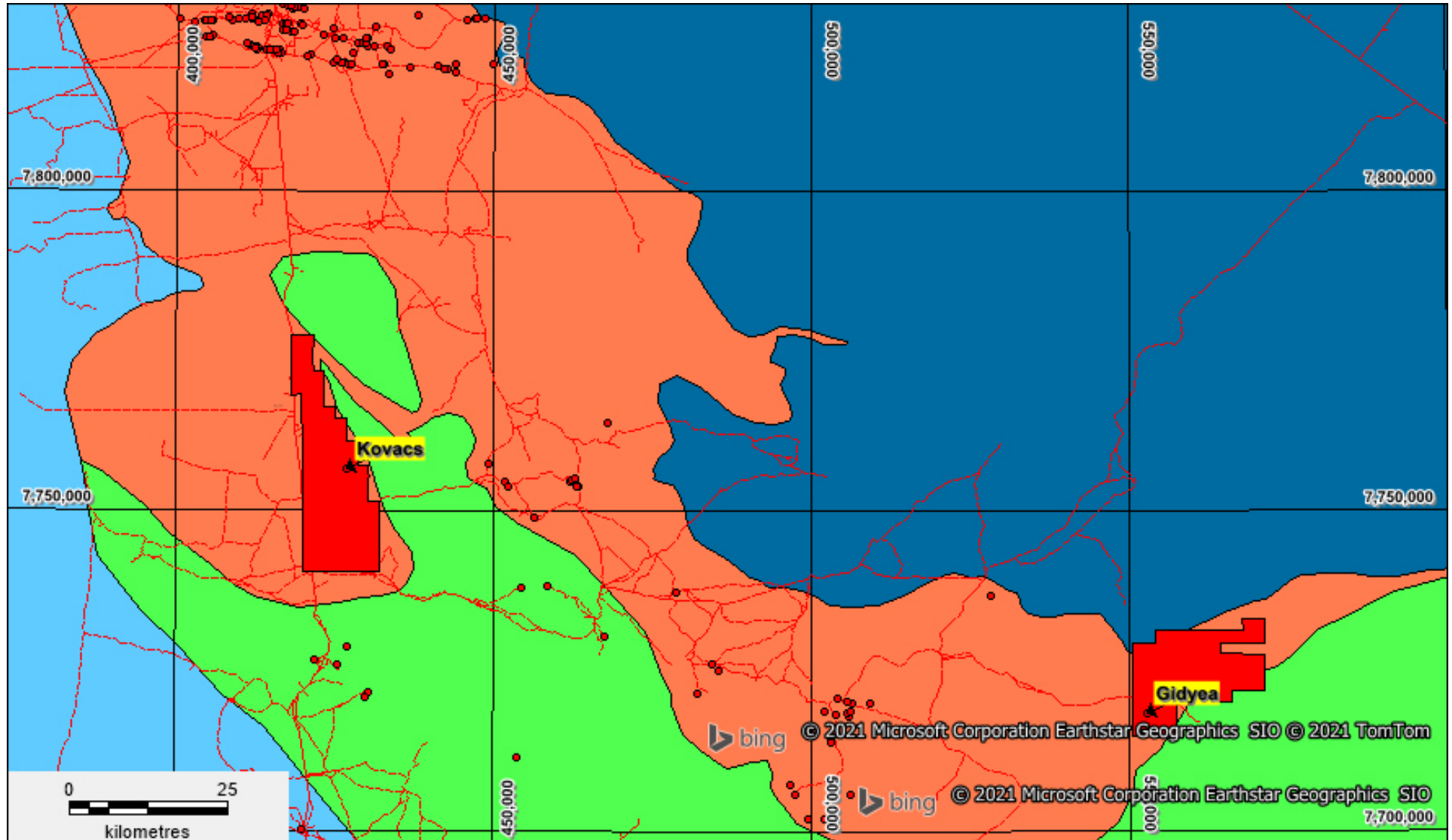
- Located in Gold Mineralised Warramunga Province Region of the Northern Territory
- Between 75km and 180km S and SW of Tennant Creek
- Since 1932 the Tennant Creek Goldfield has produced 5M ounces (156 tonnes) of gold and 345,000t of copper
- The most significant mineralisation is associated with ironstone and vein quarts in Warramunga Sediments
- Gold has been reported at 2 locations west of Gidyeya
- There is a reported cobalt occurrence within the Gidyeya tenement
- There is a gold occurrence within the Kovac tenement that has had a small amount of gold prospecting

# NT - TENNANT CREEK PROJECT LOCATION



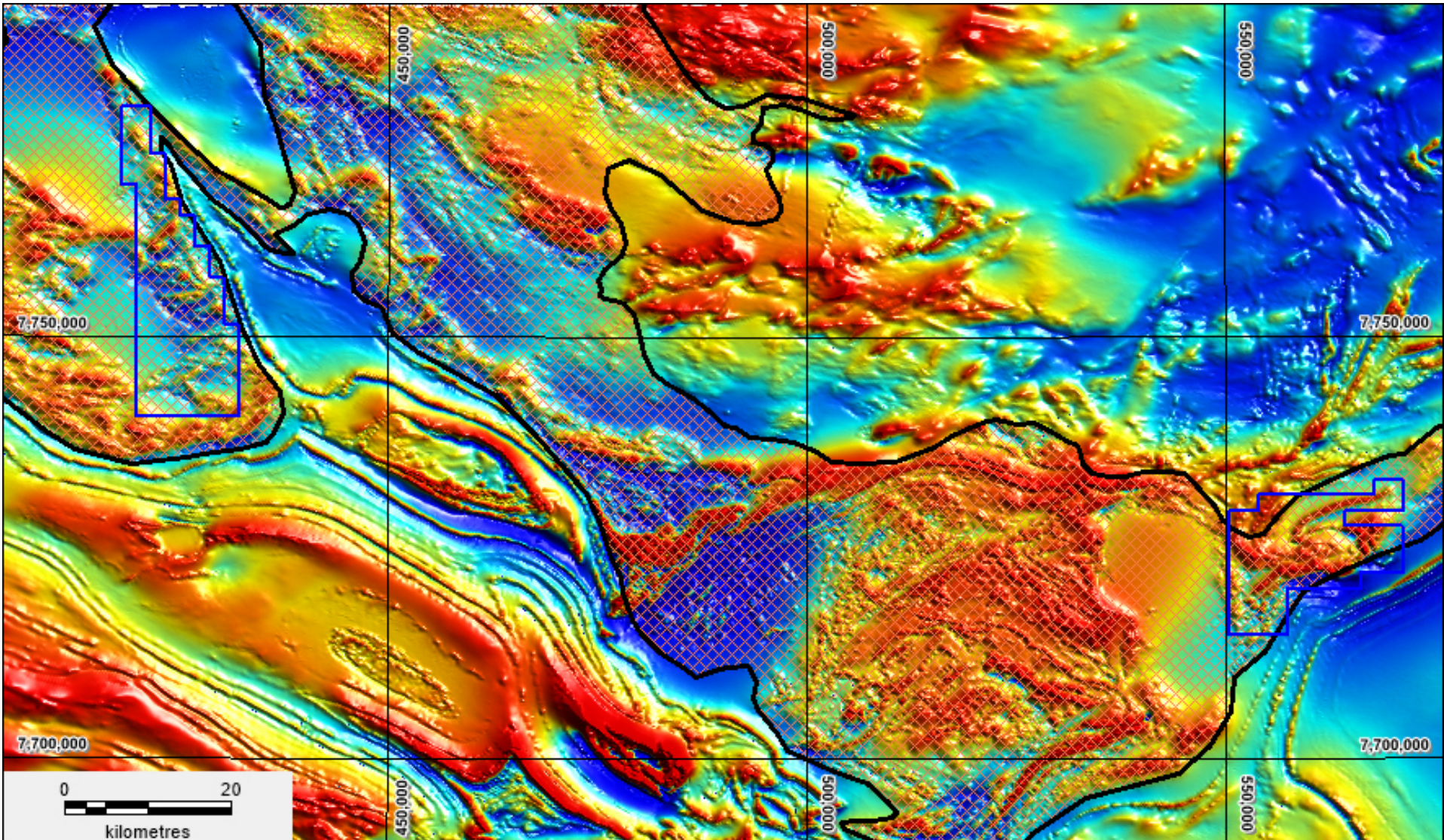
ELA 32666 (Kovac) and EL 23665 (Gidyea) Tenement Locations

# NT - TENNANT CREEK INTERPRETED GEOLOGY KAILI



Warramunga Province in Orange and Mineral occurrences as red dots

# NT - TENNANT CREEK MAGNETICS



Magnetic Image showing the projects and the Warramunga Province hatched



# NT - TENNANT CREEK PROJECT

## 2023/2024 Proposed Broad Exploration Plan



### **Kovac (Application)**

- Ground magnetics and gravity survey across the tenement
- Geological and Regolith Mapping
- Fine fraction soil sampling in selected areas in addition to rock sampling
- Shallow Aircore/RC drilling in high priority areas as defined from the exploration outlined above
- An initial meeting with Traditional Owners has been held and outcome awaited

### **Gidyea (Granted)**

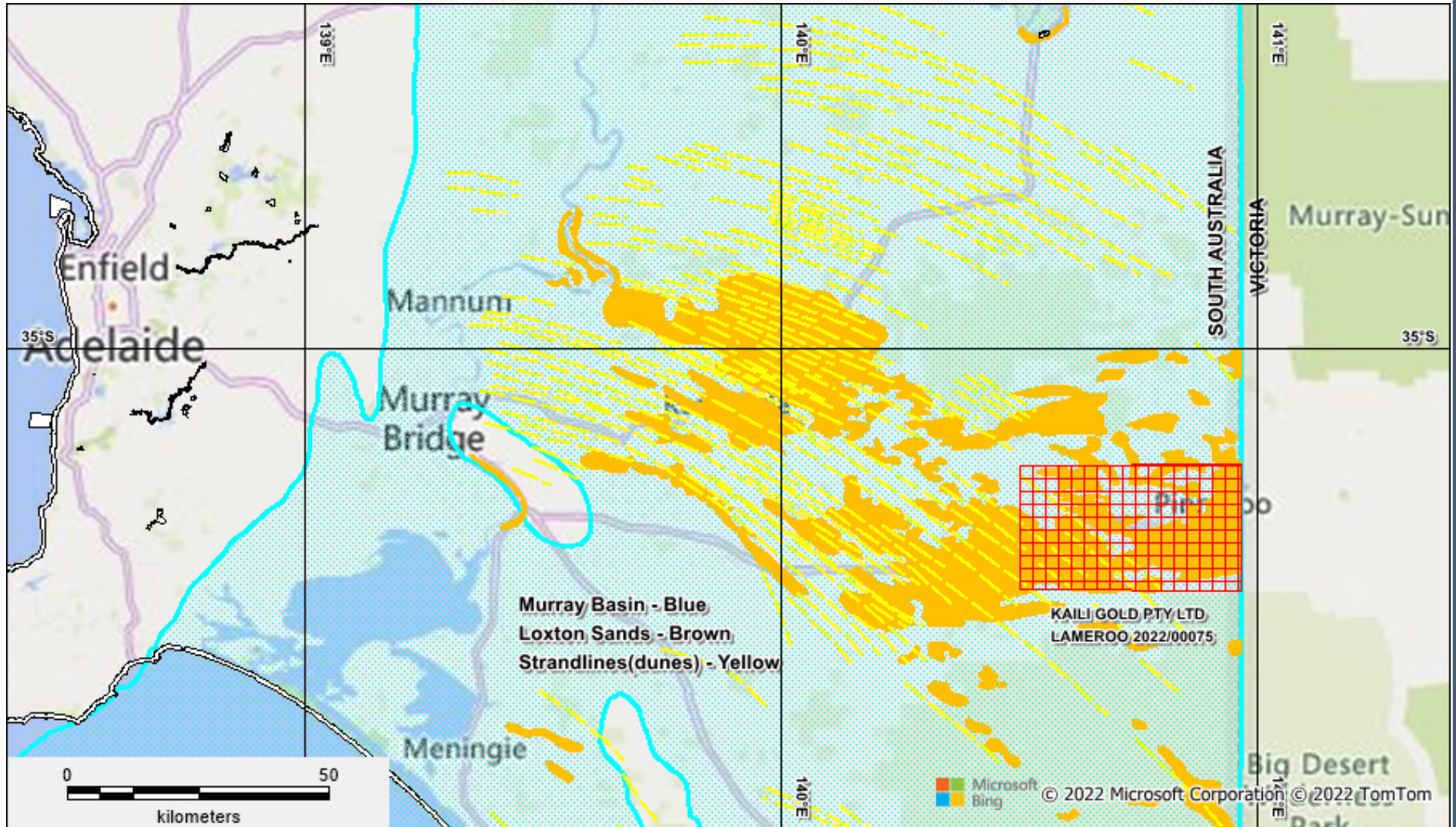
- Stream sampling in areas not already sampled and float mapping
- Localised Ground Magnetic and Gravity Surveys
- Geological and Regolith Mapping
- Fine fraction soil sampling in selected areas in addition to rock sampling
- Shallow Aircore/RC drilling in high priority areas as defined from the exploration outlined above
- A work program has been submitted and approval is awaited
- Initial surface sampling and mapping planned for 2023 subject to approval.

# SA - LIMESTONE COAST – MURRAY BASIN RARE EARTH ELEMENTS PROJECT



- Aim to explore for REE contained within the fine clay fraction of Tertiary (65 to 2.5 Million Years Ago) Strandlines (“ionic clay style of deposit) reportedly existing in the region
- Australian Rare Earth (ASX:AR3) has a large exploration area in the region and recently announced following a drilling program an increased JORC inferred mineral resource of 81.4 MT @ 785 ppm TREO (Total Rare Earth Oxides) at their Koppamurra project prospective for ionic clay REE deposit (see AR3’s ASX announcement of 4 July 2022).
- REE have been designated critical minerals by Australia, EU, USGS and IEA and are used in rare earth permanent magnets for electric vehicles (EV), wind turbines and many electronic devices.

# SA - LIMESTONE COAST - LAMEROO PROJECT KAILI



Lameroo Project located within the Murray Basin of South Australia

# SA - LIMESTONE COAST– LAMEROO PROJECT

## 2023/2024 Proposed Broad Exploration Plan

---



- Review of all historic drilling across the tenement
- Field visit to locate possible drill sites for verge drilling
- Presentation to the district councils
- pXRF sampling of historic drilling
- Attend to any Traditional Owners requirements
- Obtain approval for field exploration

## **Notes Specific - ASX Announcements AGM Presentation**

The following announcements were lodged with the ASX (including supporting JORC Reporting Tables) and details for each of the sections noted in this Presentation and can be found in the announcements. Note that these announcements are not the only announcements released to the ASX since the last AGM on 23 December 2021 but specific to exploration reporting. The Company confirms that it is not aware of any new information or data that materially affects the information previously reported;

Drilling Results at Gindalbie Gold Project, Yilgarn Craton WA - 3<sup>rd</sup> December 2020

Quarterly Activities Report December 2021 - 31<sup>st</sup> January 2022

RC drilling commences at Gindalbie Gold Project WA - 7<sup>th</sup> February 2022

Drilling completed at Gindalbie WA – 17<sup>th</sup> February 2022

Annual Report to shareholders – 30<sup>th</sup> March 2022

RC drilling results at Canegrass, Gindalbie Project - 4<sup>th</sup> April 2022

Quarterly Activities Report March 2022 – 29<sup>th</sup> April 2022

Quarterly Activities Report June 2022 – 29<sup>th</sup> July 2022

Half Yearly Report – 13<sup>th</sup> September 2022

Grant of EL6856 for Rare Earths Exploration in SA - 21<sup>st</sup> October 2022

Quarterly Activities report September 2022 – 26<sup>th</sup> October 2022

IP Survey Commences at Canegrass Yilgarn Gold Project WA - 15<sup>th</sup> November 2022

IP Survey Completed at Canegrass WA - 9<sup>th</sup> December 2022

*The information in this announcement that relates to exploration targets and exploration results is based on information compiled by Mark Derriman competent person who is a member of the Australian Institute of Geoscientists (AIG). Mark Derriman is a consultant of Kaili Resources Limited. Mark Derriman has sufficient experience that is relevant to the style of mineralisation and type of deposits under consideration and to the activity being undertaken to qualify as a Competent Person as defined in the 2012 edition of the JORC Code. Mark Derriman consents to the inclusion in this announcement of the matters based on his work in the form and context in which it appears.*